



Homes Built To Impress.
Crafted For A Sense Of Belonging.

VELAR

URBAN SQUARE
Coimbatore



Your Soul Finds Its New Home Here.

Urban Square is where thoughtful craftsmanship meets modern aspirations — a space that doesn't just house you but understands you. Set in the heart of Coimbatore's growing IT hub, Urban Square is more than just a residence, it is the redefinition of opulence, with a true sense of belonging.

Contents

| | | | |
|----------------|-----|----------------------------|-----|
| Overview | 04. | Specs, Amenities & Gallery | 07. |
| Key Highlights | 05. | Floor Layouts | 10. |
| Design Note | 06. | Location & Proximity | 15. |



Every Home Has Walls. And Here, We Give It A Soul.

At Urban Square, we believe in homes that are more than just a place to live — they are spaces that nurture your being. They breathe, evolve, and embrace the people within. Designed with a seamless blend of aesthetics and functionality, every space here is an invitation to elevate your living.



Urban Square's Testament To Architectural Elegance

Urban Square is defined by its clean, contemporary lines, abundant natural light, and open-flowing spaces creating a home that is both sophisticated and serene. Spanning 60 cents, the development features 40 elegantly designed apartments across 5 floors. With a mix of 3BHK and 2BHK homes, each residence is designed around a lush central courtyard, blending beauty, privacy, and community.

Architectural Composition

- 5 Floors – Thoughtfully designed for refined living
- Stilt Parking – Dedicated space for convenience
- Central Courtyard – The green heart of the community
- 5 Typical Floors – Each crafted for privacy and openness
- Terrace Recreation Area – A serene space for leisure and wellness

Dwelling Details

- Total Number of Units – 40 Exclusive Residences
- 3BHK Homes – 20 Units
- 2BHK Homes – 20 Units

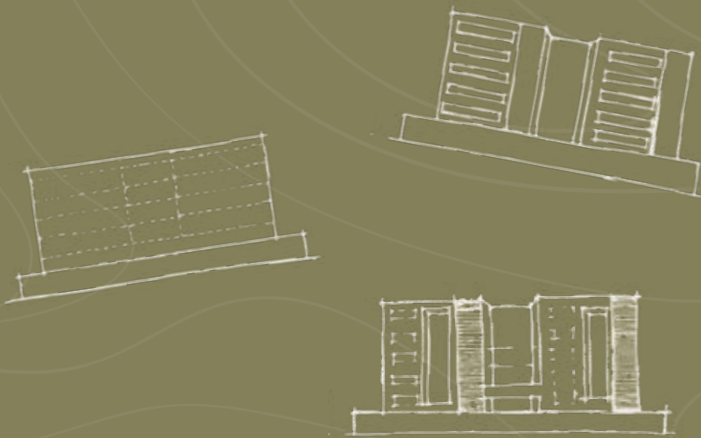
Unit Specifications

- Units Per Floor – 8 Residences
- 3BHK Sizes: 2,251 – 2,311 Sq. Ft.
- 2BHK Sizes: 1,233 – 1,287 Sq. Ft.



We Believe In Spaces That Speak To Your Soul.

Ar. Pradeep Arumugam
Principal Architect
w.a.r.p



Urban Square is all about clean lines, soft curves, and cascading greenery—minimal, elegant and inviting. Floor-to-ceiling windows let the light pour in, framing calming views of the lush outdoors, while the greenery woven into the balconies brings nature right to your doorstep.

Design Note



At its core, a beautifully designed central courtyard and a striking double-height atrium keep the space open, airy, and alive. It's not just about aesthetics—it's about creating a home that feels connected, breathable, and full of life.



Every home is designed with both function and privacy in mind—no shared walls, just open, flowing spaces that feel like yours alone. It's a thoughtful blend of design and comfort, making every inch feel intentional, elegant, and made for the way you live.



Specifications & Amenities



Structure

- Seismic Zone III compliant RCC framed structure.
- Walls will be of solid blocks / Fly ash Bricks- Plastered on both sides.



Flooring

- Large format Vitrified Tiles for Living , Dining , Kitchen & Bedrooms.
- Toilets - Anti-skid tiles.
- Common area & Staircase - Granite.
- Utility / Balcony - Vitrified Tiles.



Wall Tiles

- Toilets - Premium tiles upto ceilingheight.
- Kitchen - Designer tile DADO for 2 feet height over counter.
- Utility - Designer tile DADO up to 4 feet height.



Windows & Ventilators

- UPVC or Aluminum windows.



Doors

- Main Door - Wooden door frame with 40mm thick teak wood veneer shutter, polished on both sides.
- Bedroom Door - Teak Wood doorframe with 32mm thick Veneer Polished Door.
- Toilet Door - WPC frame with Laminate flush door.



Kitchen

- Steel grey granite counter top and single bowl sink with drain board.



Plumbing & Sanitary Fittings

- CPVC concealed line with luxury CP fittings & Sanitaryware by Kohler / Roca or Equivalent.



Elevator

- 10 passenger elevator (Johnson or equivalent).



Driveway

- As per Architect's Specification.



Painting

- Internal walls and ceiling: Two coats of putty, one coat primer and two coats of emulsion paint (Dulux or Asian).



Security System

- Video door phone for all apartments.
- CCTV camera around the driveway and entrance.



Power Backup

- To connect 1 light and 1 fan in living, dining and all bedrooms, with a load limiter of 2.5 KVA and additional backup to connect elevator and common lighting.



Electrical

- Concealed wiring with modular switches (Havells Crabtree or Equivalent).
- 3 phase electricity supply with MCB and RCCB.
- Telephone point provision in living and master bedroom.
- A/C Provisions for all bedrooms, living and dining.

Amenities



Central Courtyard with Kids Play Area.



Adequate landscape around the building.



Fully equipped gymnasium.



Rooftop Recreational Area, Yoga / Meditation room, Multi-purpose hall.

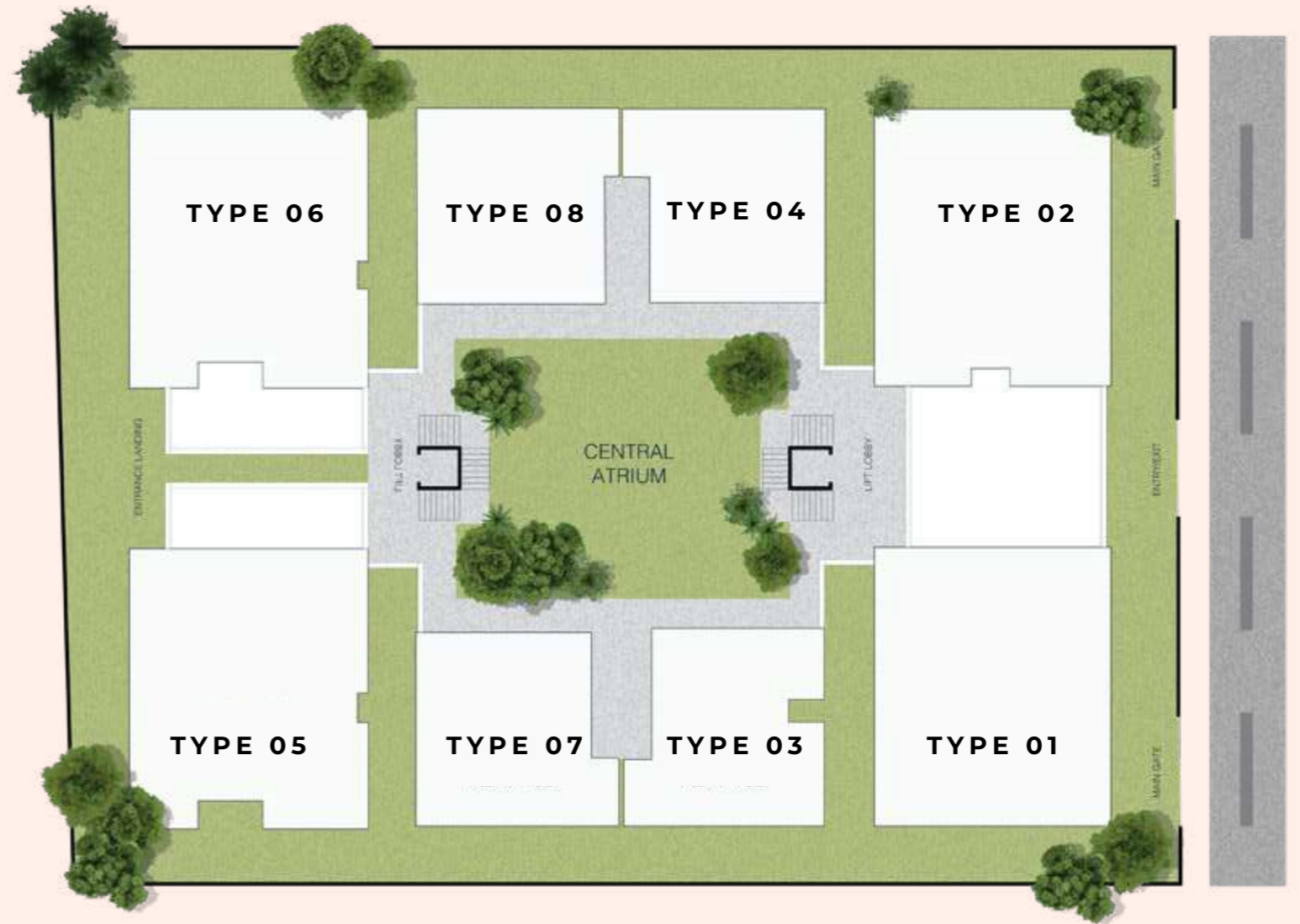


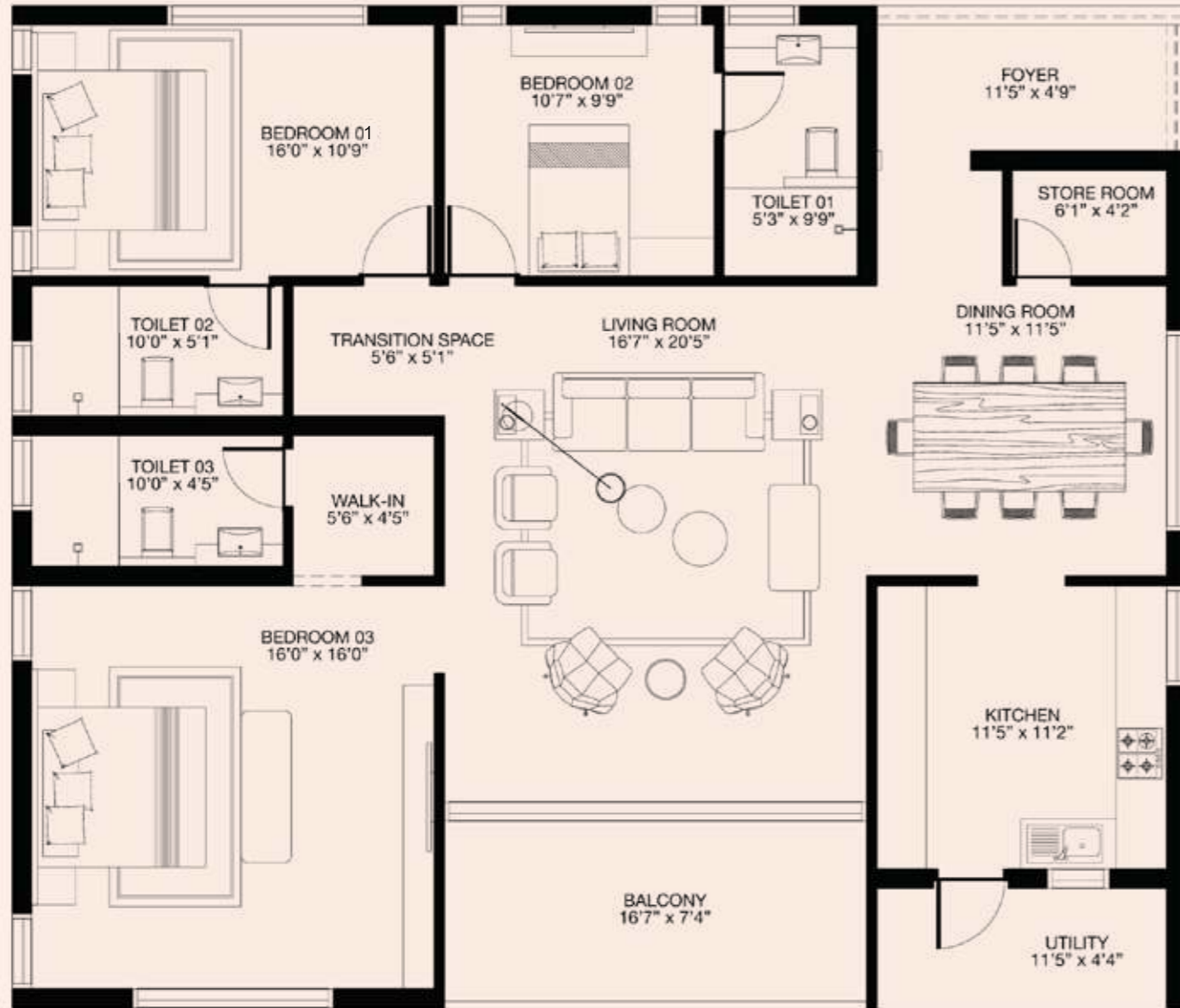
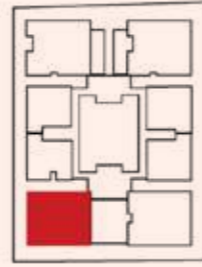


URBAN SQUARE

Floor Layouts

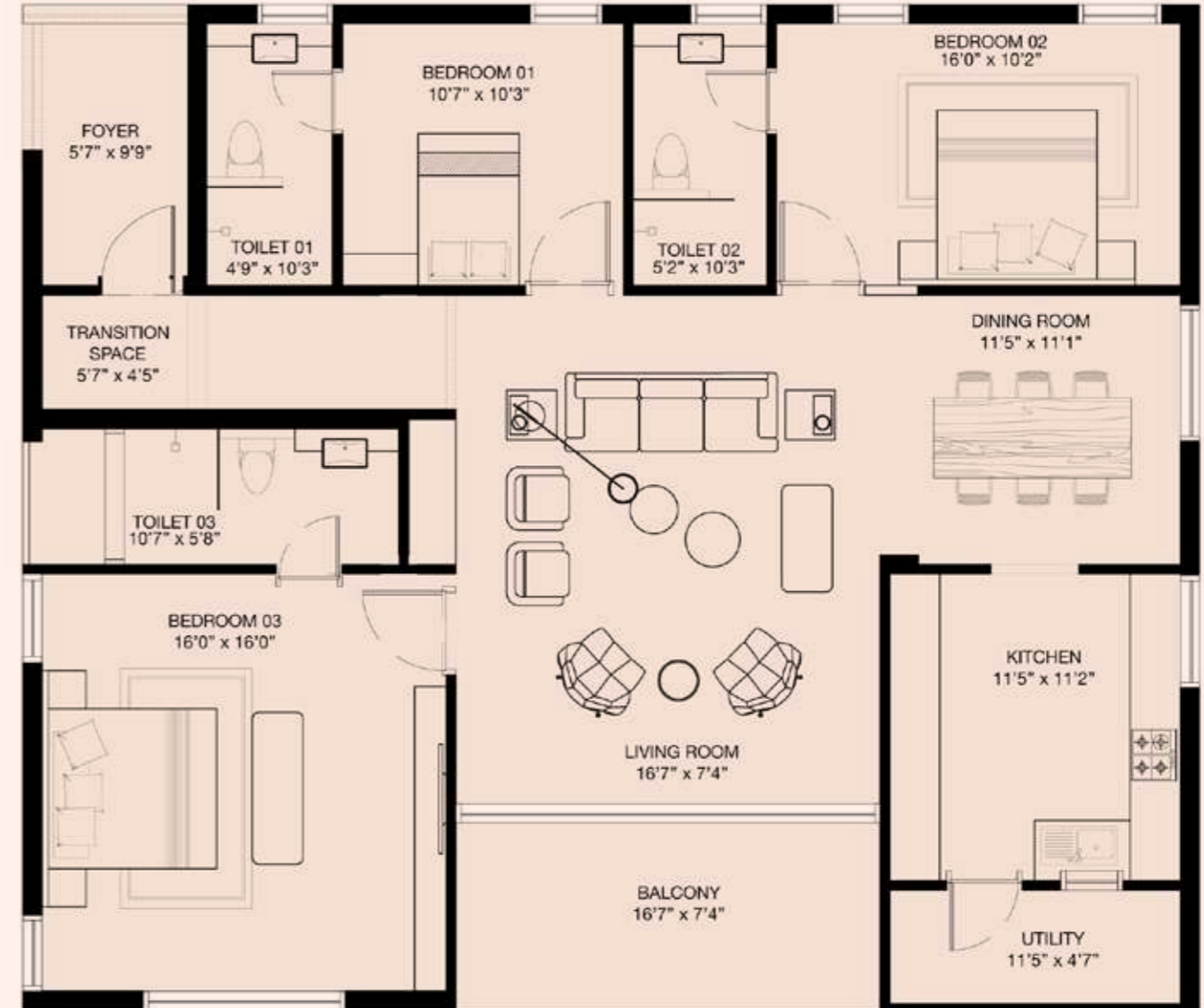
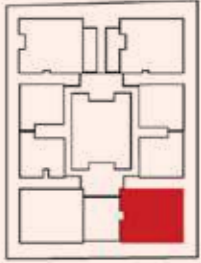
Typical Floor Layout





TYPE 01

SALEABLE AREA
2312 SQ.FT



TYPE 02

SALEABLE AREA
2310 SQ.FT





TYPE 03

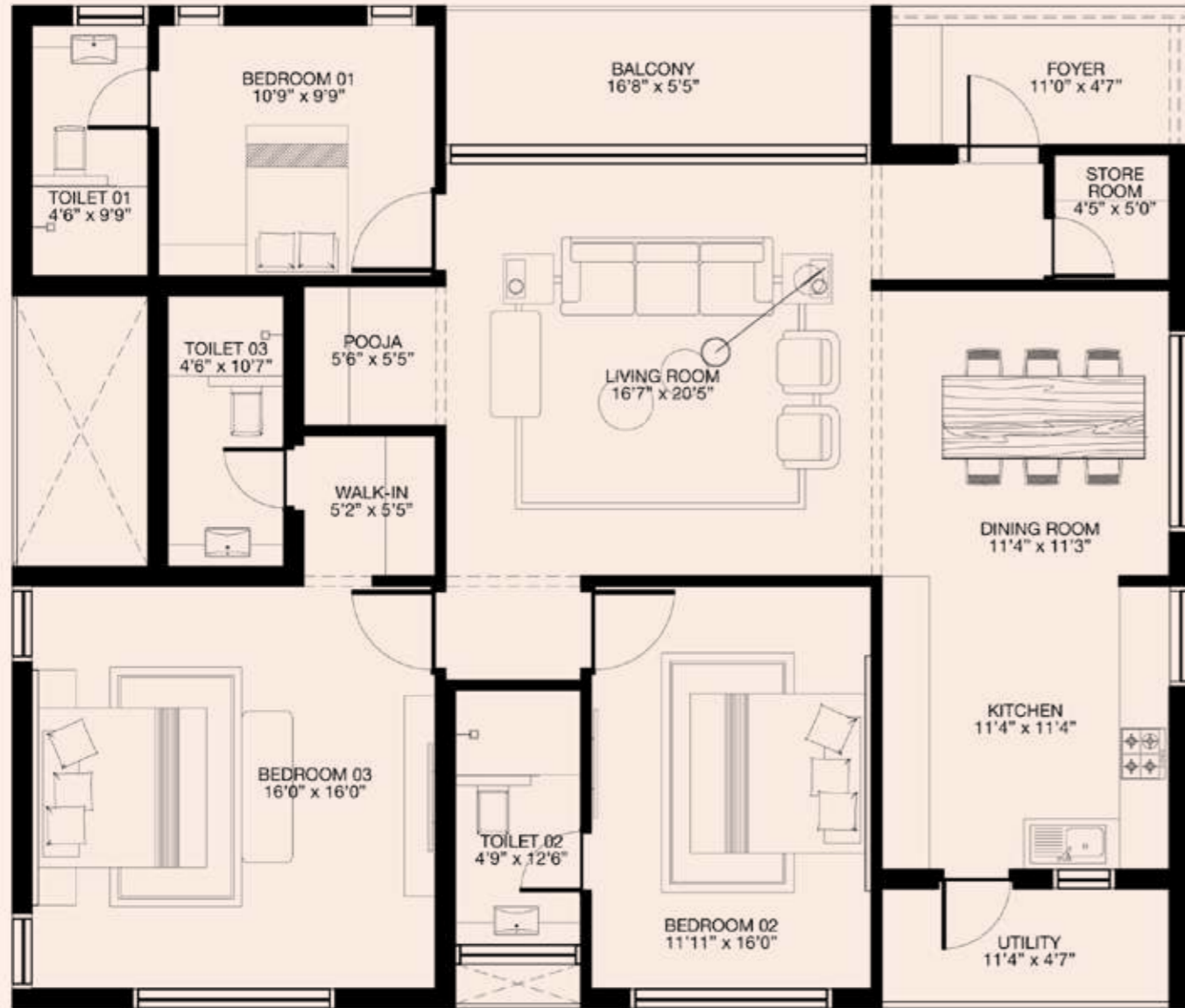
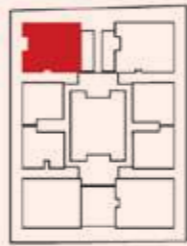
SALEABLE AREA
1233 SQ.FT



TYPE 04

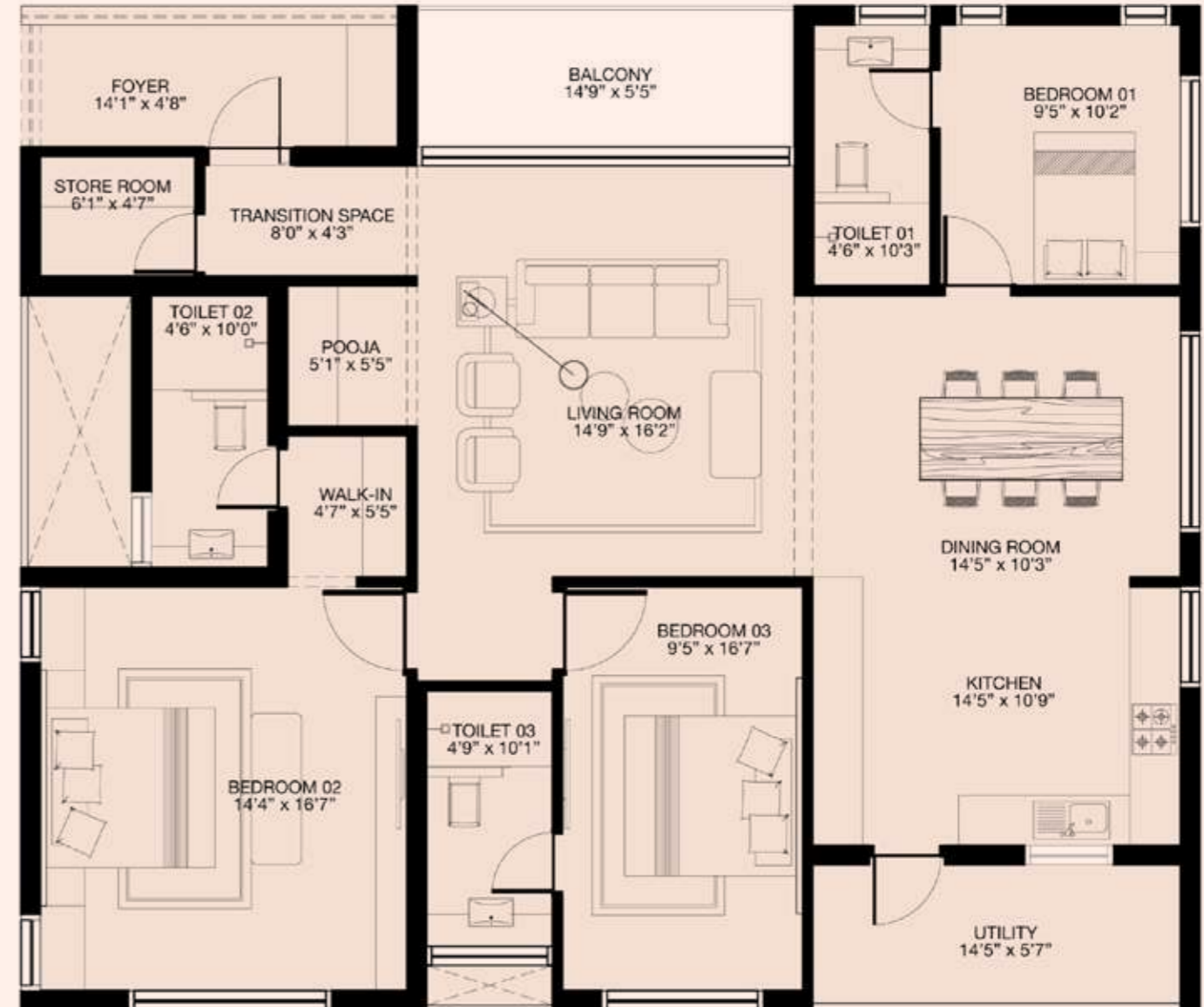
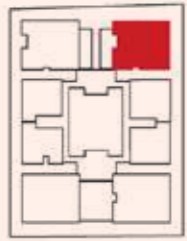
SALEABLE AREA
1261 SQ.FT





TYPE 05

SALEABLE AREA
2251 SQ.FT



TYPE 06

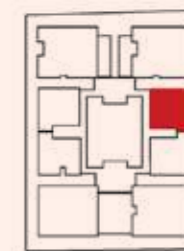
SALEABLE AREA
2257 SQ.FT





TYPE 07

SALEABLE AREA
1267 SQ.FT



TYPE 08

SALEABLE AREA
1287 SQ.FT



Location



A Location That Keeps You Close To Everything, Yet Far From The Chaos.

Urban Square puts you right where you need to be—close to essentials, yet tucked away in your own peaceful corner. It's the perfect balance of convenience and calm, just the way it should be.



Effortless Travel

- 14 mins – Coimbatore International Airport
- 30 mins – Coimbatore Railway Station



Premier Schools & Colleges Nearby

- 1 min – Aalam Montessori School
- 8 mins – Reeds World School
- 12 mins – RAK's Pallikkoodam
- 20 mins – PSG College
- 20 mins – Kumaraguru College



Top Healthcare Within Reach

- 9 mins – Kovai Medical Center & Hospital
- 22 mins – NG Hospital & Research Centre
- 31 mins – GEM Hospital Coimbatore



Business & IT Hubs Closeby

- 3 mins – SVB Tech Park
- 18 mins – Tidel Park



Scan The Qr Code To Get The Location.





VELAR
INFRA PROJECTS LLP

Get In Touch With Us

Disclaimer: The rendered images are purely an artist's indicative depiction and are subject to revisions.

Phone Number: +91 98840 77144

Email Id: siva@velarinfra.com

Website: www.velarinfra.com

Address: 12A/31, Viswanathapuram 3rd Street,
Kodambakkam, Chennai - 600024,
Tamil Nadu, India

